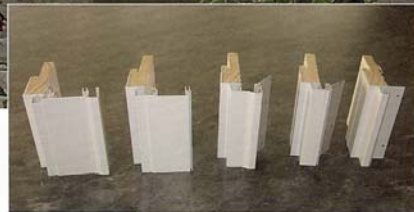
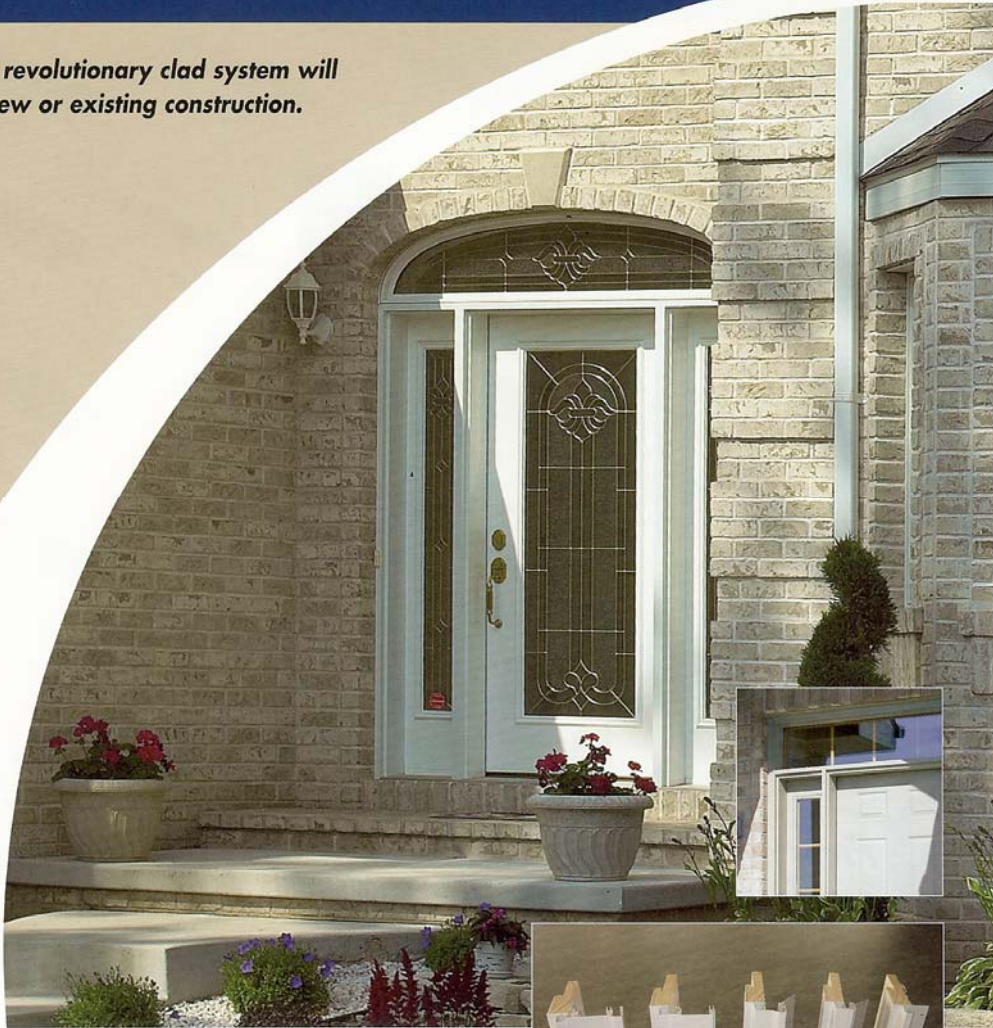


# ENTRY DOOR CLADDING

CLASSIC SYSTEM

*This revolutionary clad system will  
fit new or existing construction.*



# ENTRY DOOR CLADDING

## CLASSIC SYSTEM



2929 Walker Drive  
PO Box 9229  
Green Bay, WI  
54308-9229

920-406-4600  
Fax: 920-406-4646

www.frontlinebldg.com

EDC1205/20,000 ©2005

### FEATURING:

- **Brickmould**  
Same dimension and profile as wood 180 brickmould.
- **Crownline**  
A medium width nosing profile.
- **Slimline**  
Nosing profile to match clad window systems.
- **3 1/2" Casing**  
When applied to Crownline provides wide casing profile.
- **Backband**  
When applied to 3 1/2" Casing provides decorative border profile.
- **Mull Covers**
- **Jamb Extenders**
- **Flexible or rigid nail fin**
- **Heavy-duty .062 aluminum**
- **No exposed fasteners**
- **New construction or retro-fit**

### STANDARD COLORS\*:

White, Sandstone, Bronze, Bahama Brown, Green, and Terratone.

\*Almond, Eggshell, Brick Red, and Tan available in select styles only. See your sales representative for details. Custom colors available.

Patent Pending

DISTRIBUTED BY: